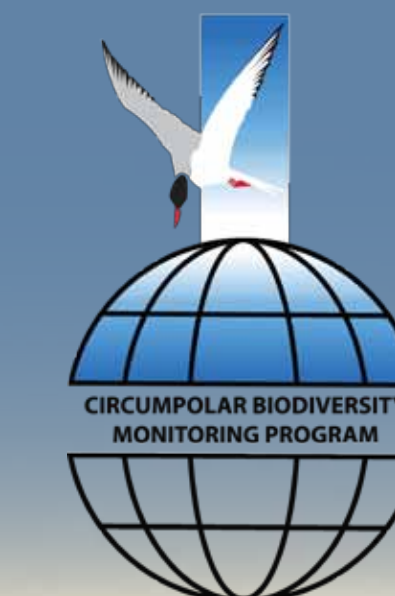


The Circumpolar Biodiversity Monitoring Program

Monitoring Arctic life to improve decision making

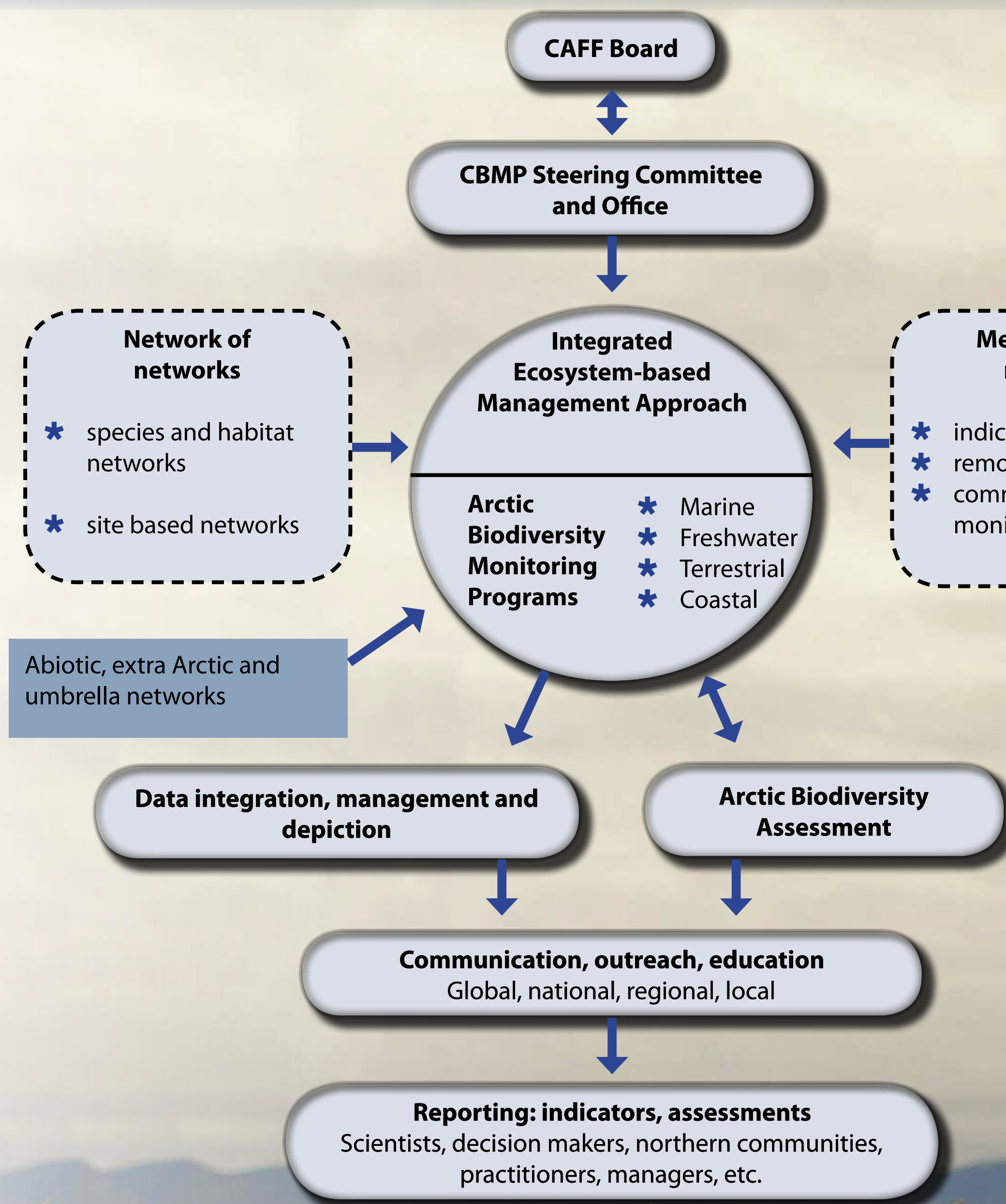


What is the Circumpolar Biodiversity Monitoring Program (CBMP)?

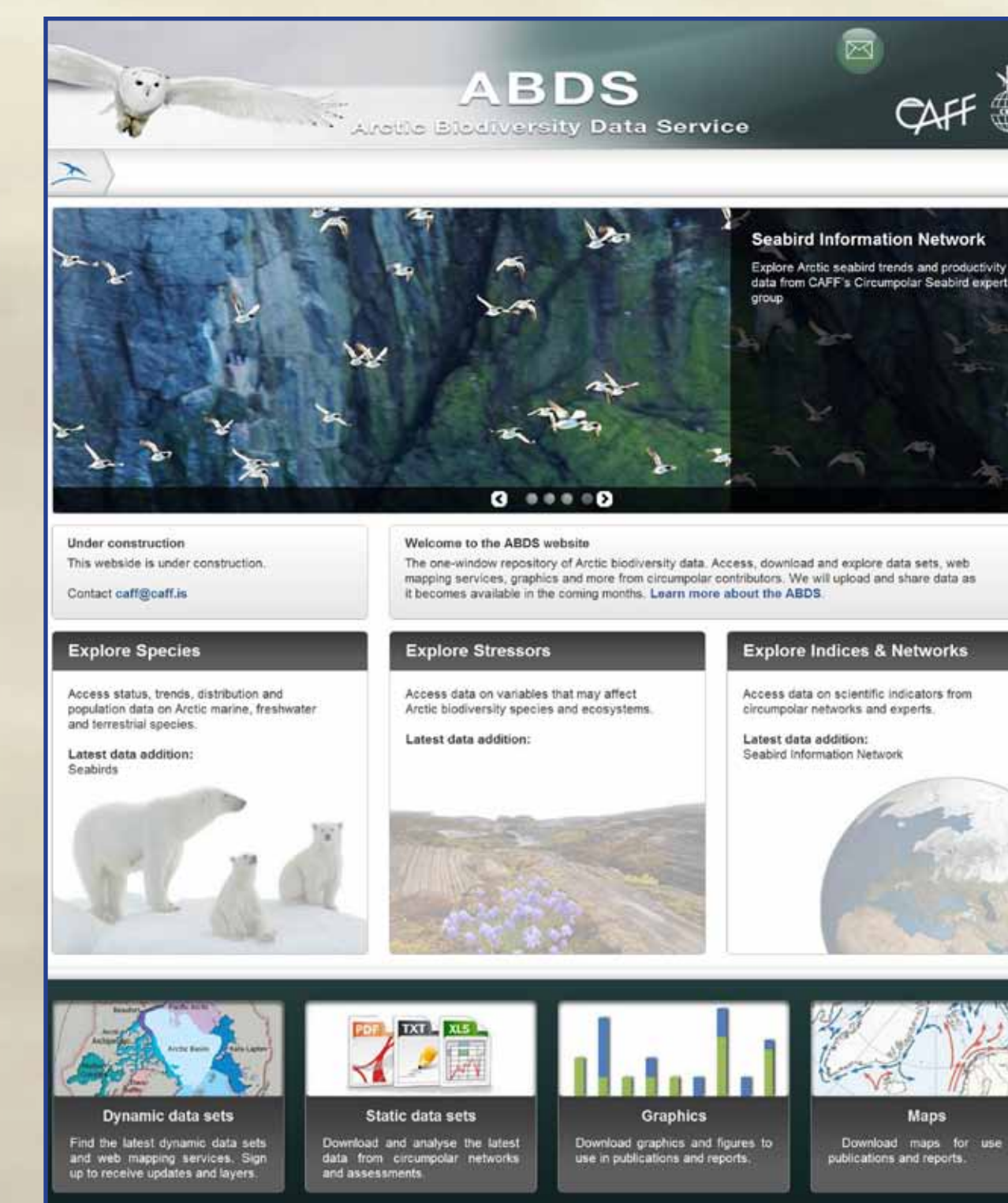
- ★ An international network of scientists, government agencies, Indigenous organizations and conservation groups working together to improve detection, understanding and reporting of Arctic biodiversity trends.
- ★ The cornerstone program of the Conservation of Arctic Flora and Fauna (CAFF), the Arctic Council's biodiversity working group.
- ★ A focal point for current and credible Arctic biodiversity information.
- ★ A means to shorten the response time between identification of a threat and an effective policy response.

The CBMP improves decision making by providing:

- ★ **Environmental baselines** to facilitate a greater understanding of Arctic ecosystems and how they may respond to change.
- ★ The **Arctic Biodiversity Data Service** (ABDS data portal), an accessible, efficient, and interoperable infrastructure to house, manage, and display status and trends information.
- ★ **Authoritative assessments** of the Arctic's biodiversity, targeting regional, national, and international reporting requirements.
- ★ **Harmonized biodiversity monitoring** efforts across the Arctic to improve program efficiencies, leverage program results and increase the power of analyses.



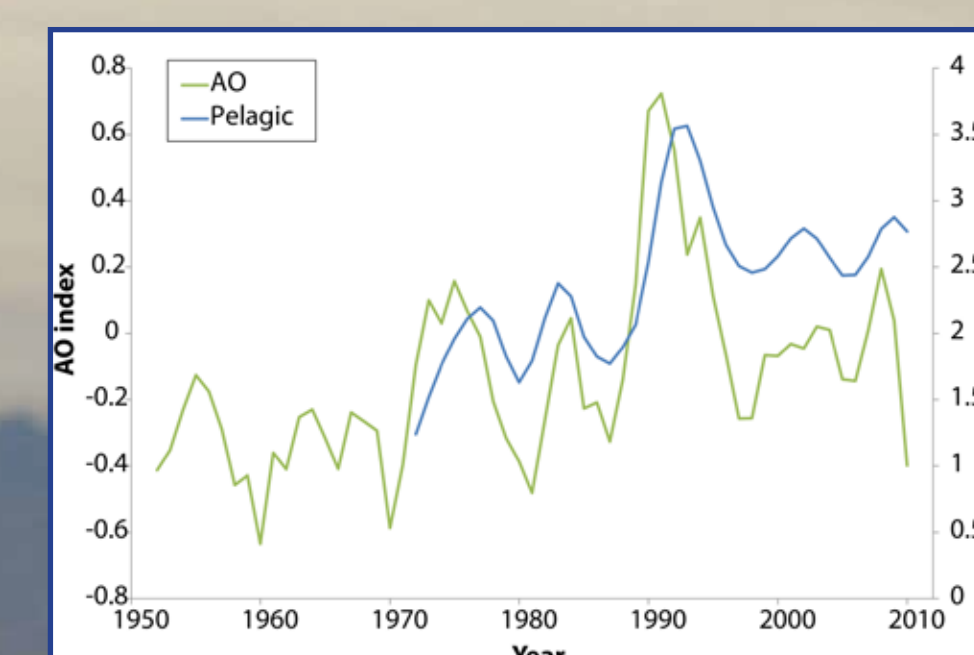
Arctic Biodiversity Data Service



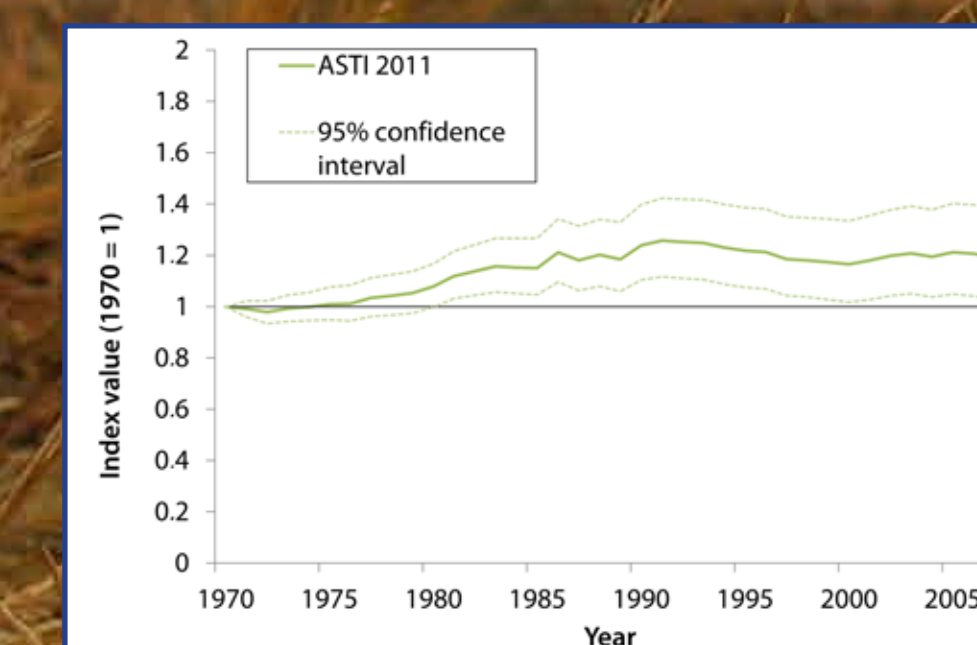
Seabird Information Network



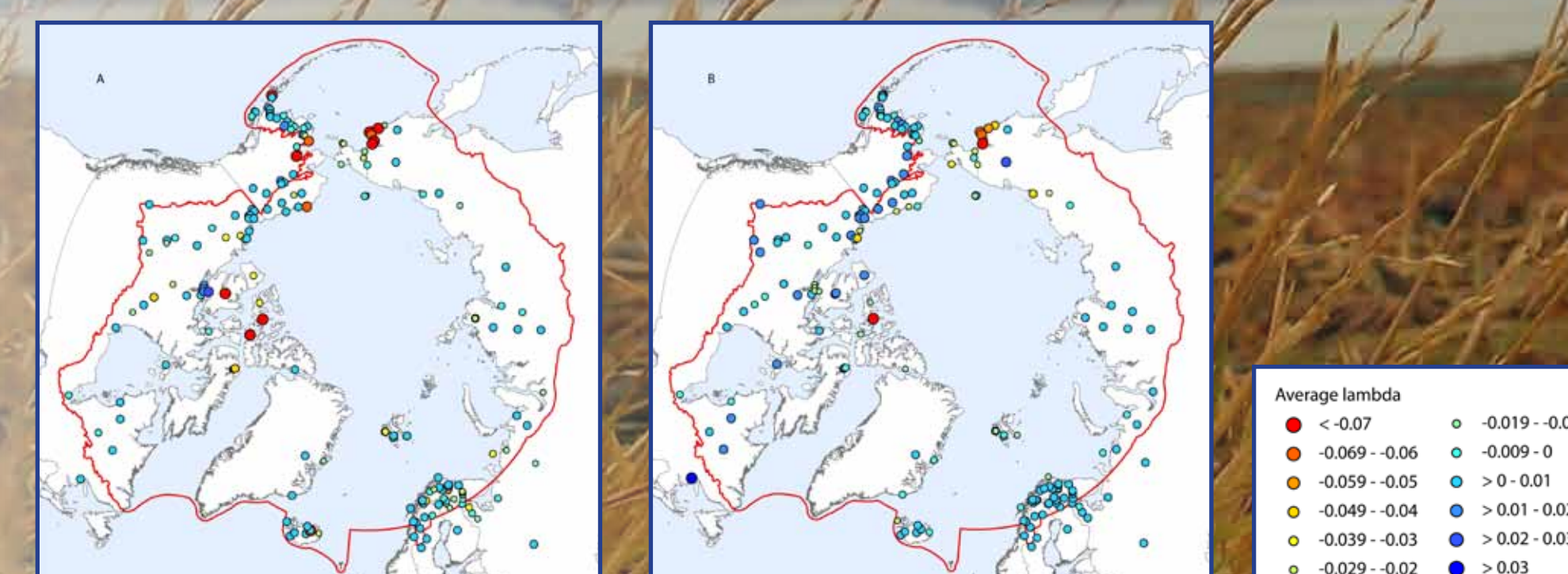
Pelagic fish linked to Arctic Oscillation



Arctic Species Trend Index



Predictive models: Comparison of observed (A) and predicted (B) population trends expressed as average rates of change, for terrestrial data only



www.cbmp.is
www.abds.is
www.caff.is



Environment
Canada

Environnement
Canada



GEO BON

